

5 Technology Imperatives

TO BECOMING A DATA-DRIVEN ORGANIZATION



Basic business sense tells us that, in order for hospitals and health systems to be successful, revenue has to keep flowing. Since revenue is directly related to ordering, scheduling, tracking, and ultimately delivering patient care, there's a lot of critical data that must be appropriately managed to keep accounts receivable down and productivity up.

Vyne Medical's Trace® platform is an easy-to-implement and easy-to-use solution for connecting disconnected data in healthcare. Trace helps create a more complete patient record, prevent lost revenue and enhance workflows by collecting and integrating digital voice, fax and image data.

Hundreds of hospitals are driving process improvements through our healthcare-centric platform that meets five key imperatives for effective health data management.

How does your organization's data management solution stack up? Is it...

1 Comprehensive

- Integrated workflows for disparate data
- Single access point for EHR and ancillary data
- Data translated into actionable insights



2 Connected

- Data linked to the patient for enterprise access
 - Unified view of all patient data collected
 - Auto-indexing of form data to the EHR



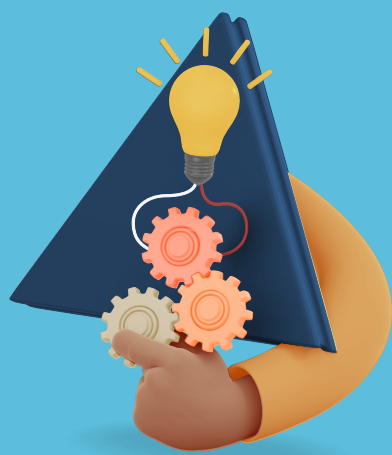
3 Accessible

- Fully digital, integrated, searchable data
- Real-time cloud network
- Protected access from anywhere



4 Automated

- Tailored workflow dashboards
- Custom fields for team-driven worklists
- Quality assurance scorecards and reports



5 Integrated

- Integrations to streamline care coordination
- Auto-export for syncing data to the EHR
- Auto-import to drive workflows and QA



If your system doesn't meet these imperatives, we can help.
Contact Vyne Medical today: 800.864.2378